

# 100mm Wide x 215mm Deep Prestressed Concrete Lintel.

(built in upright orientation)

Maximum factored line loads on lintels.

	CLEAR SPAN																
	600	750	900	1050	1200	1350	1500	1650	1800	1950	2000	2150	2300	2450	2600	2750	2900
UDL (kN/m)	109.24	75.86	55.73	42.67	33.72	27.31	22.57	18.97	16.16	13.93	12.14	10.67	9.45	8.43	7.57	6.83	6.19

Minimum bearing length required in 100mm wide masonry walls - 7N/mm<sup>2</sup>.

Clear Span	600	750	900	1050	1200	1350	1500	1650	1800	1950	2000	2150	2300	2450	2600	2750	2900
Bearing each side	150	150	150	150	150	150	150	150	150	150	200	200	200	200	200	200	200
Lintel Length	900	1050	1200	1350	1500	1650	1800	1950	2100	2250	2400	2550	2700	2850	3000	3150	3300

## Standards

Manufactured in accordance with IS EN 845-2: 2013 & BS 13369

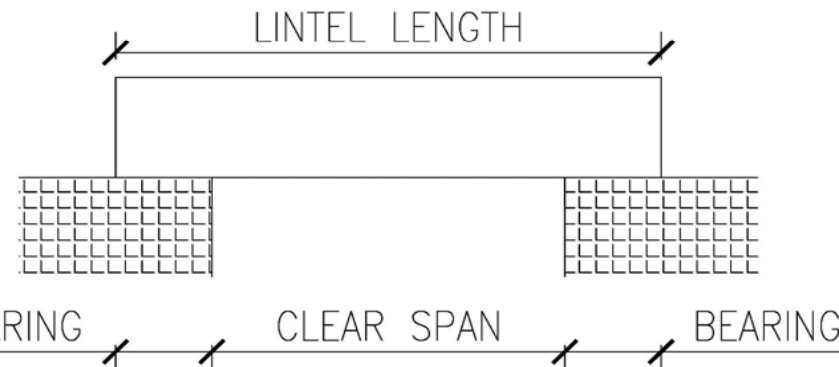
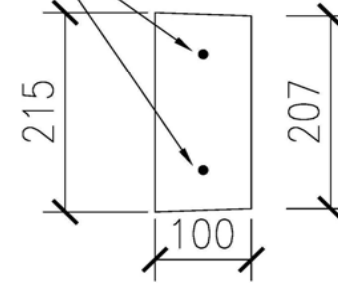
## Prestressed Units

Minimum Concrete Strength after 28 days = C30/40

Minimum Steel Tensile Strength = 1670N/mm<sup>2</sup>

Steel 0.1% proof stress 9.3mm wire = 104kN

2No 9.3mm $\emptyset$  strands



Townparks, Ardee, Co. Louth, Ireland, A92 AP84  
 Tel: +353 41 6856372  
 Fax: +353 41 6857216  
 Email: info@ardeeprecastconcrete.ie  
 Web: www.ardeeprecastconcrete.ie



3 Drumard Road, Magherafelt, Co. Derry, BT45 8QA  
 Tel: +44(0)28 67721286  
 Email: info@fpmccann.co.uk  
 Web: www.fpmccann.co.uk

14/08/2019

APC-754