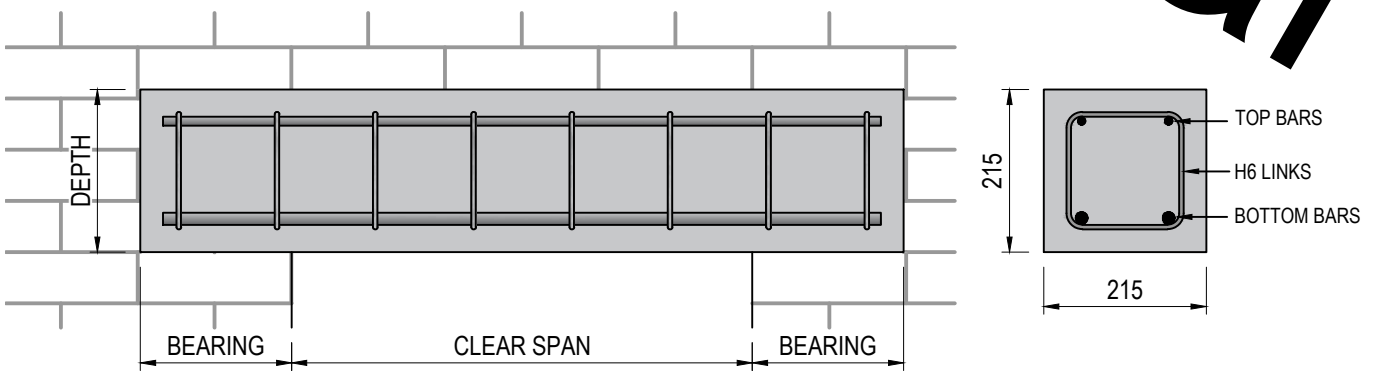


APC - 215mm WIDE X 215mm DEEP PRECAST CONCRETE LINTEL

NOTES:

1. TOP AND BOTTOM COVER TO LINK = 30mm
2. CONCRETE COVER IS BASED ON AN EXPOSURE CLASS OF XC3/4 WITH A MINIMUM COVER OF 25mm AND A DEVIATION OF 5mm
3. CONCRETE STRENGTH C35/45
4. ULS LOADS PROVIDED ARE PERMITTED LOADS IN ADDITION TO THE SELF WEIGHT OF THE LINTELS
5. LOAD CAPACITY AND BEARING LENGTHS ASSUME UDL LOADING ONLY. ANY OTHER TYPES OF LOADING OR COMBINATION REQUIRES VERIFICATION BY THE LINTEL SUPPLIER.
6. LINTEL SELF WEIGHT (UNFACTORED) = 1.11kN/m
7. DESIGN OF LINTELS IS TO EN1992-1-1
8. DETAILING OF REINFORCEMENT IS TO EN1992-1-1 AND TO BS8666
9. CALCULATIONS ARE BASED ON $\gamma_s=1.05$ AND $\gamma_c=1.4$, TO EN1992-1-1 ANNEX A.
10. SOLID BLOCK, BRICK OR CONCRETE BEARING PAD TO SUPPORT DIRECTLY UNDER LINTEL. NO CUT BLOCKS TO BE USED.
11. BLOCK STRENGTH FOR APPLIED BEARING AREA NEEDS TO BE CONFIRMED BY STRUCTURAL DESIGNER
12. BLOCK STRENGTHS MIN 7.5 N/mm²

LINK SIZE		215mm WIDE X 215mm DEEP											
Top Bar		2No. H10	2No. H10	2No. H10	2No. H10	2No. H12	2No. H12	2No. H12	2No. H12	2No. H12	2No. H12	2No. H12	2No. H12
Btm Bar		2No. H10	2No. H12	2No. H16	2No. H20	2No. H20	2No. H20	2No. H20	2No. H20	2No. H20	2No. H20	2No. H25	2No. H25
Links		6mm Ø links @ 130mm c/c						6mm Ø links @ 125mm c/c					
CLEAR SPAN [m]	ULS [kN/m]	BEARING Min [mm]	ULS [kN/m]	BEARING Min [mm]	ULS [kN/m]	BEARING Min [mm]	ULS [kN/m]	BEARING Min [mm]	ULS [kN/m]	BEARING Min [mm]	ULS [kN/m]	BEARING Min [mm]	ULS [kN/m]
0.5	22.5	200	230.5	200	303.5	200	479.5	250	479.5	250	699.5	300	
0.7	121.0	200	170.0	200	227.5	200	359.5	250	359.5	250	433.1	300	
0.9	80.5	200	113.3	200	181.5	200	268.0	250	268.0	250	289.4	300	
1	67.4	200	99.4	200	158.1	200	225.0	250	225.0	250	242.9	300	
1.2	49.1	200	69.4	200	111.4	200	164.9	250	164.9	250	178.1	300	
1.5	32.8	200	46.6	200	75.0	200	111.4	250	111.4	250	120.3	300	
1.8	23.3	200	33.2	200	56.0	200	80.0	250	80.0	250	86.5	300	
2	19.0	200	27.2	200	46.0	200	65.9	250	65.9	250	71.2	300	
2.4	13.2	200	19.1	200	32.9	200	46.7	250	46.7	250	50.6	300	
2.7	10.3	200	15.0	200	25.8	200	37.3	250	37.3	250	40.4	300	
3	8.2	200	12.1	200	20.9	200	29.4	250	29.4	250	32.9	300	
3.3	6.6	200	9.8	200	17.3	200	25.1	250	25.1	250	27.2	300	
3.5	5.8	200	8.6	200	15.3	200	22.3	250	22.3	250	24.2	300	
3.6	5.4	200	8.1	200	14.4	200	21.1	250	21.1	250	22.9	300	
4	4.1	200	6.4	200	11.5	200	17.0	250	17.0	250	18.5	300	
4.25	3.5	200	5.5	200	10.1	200	15.0	250	15.0	250	16.3	300	
4.5	3.0	200	4.8	200	8.9	200	13.3	250	13.3	250	14.1	300	



<p>Townparks, Ardee, Co. Louth, Ireland, A92 AP64 Tel: +353 41 6856372 Fax: +353 41 6857216 Email: info@ardeeprecastconcrete.ie Web: www.ardeeprecastconcrete.ie</p>	Client	ARDEE PRECAST CONCRETE		Rev.	Date	By	Details Of Revision				
	Project	PRECAST LINTELS		Date	14/05/20	Sheet Size	A4	A4 Scales	NTS		
<p>Consulting Structural & Civil Engineers 6 Windsor Place, Dublin 2, D02 AV97 T: +353 (0)11 693 1908 E: admin@walshgoodfellow.com</p>	Title	215x215dp LINTELS DATA SHEET		Drawn	KP	Eng.	AK	Chk.	RG	App'd	RG
				Drawing No.	APC-752-A			Rev.	C0	Suitability	A